

# SideRoll Airbag (SRA) Installation Instructions

**Important Facts:** SRA is a Supplemental Restraint Safety System. In the event of a side roll, the SRA unit is deployed by the master roll sensor. A split second before the airbag deploys, the seat belt will pretension and, if equipped, the seat will be pulled to its lowest position. The SRA is only effective when the seat belt is used. **Instruct the user of this product to always wear their seat belt.**

**Important:**

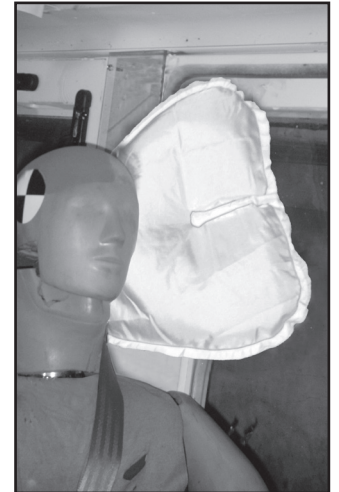
Read the entire installation instruction sheet before starting the installation of the SRA System.

- Use SRA only in approved vehicle applications and seating positions.
- Refer to the OEM's vehicle installation instructions.
- Use this guide as an addition to the manufacturer's instruction instructions.
- Always disconnect vehicle batteries and turn off vehicle switch before accessing electrical connection.
- Do not puncture, drill or apply heat to the SRA unit.
- Do not mount anything near the SRA unit that could interfere with the deployment trajectory of the device.

The SRA is designed to activate only once. If the system is activated or damaged, the SRA unit must be replaced by authorized personnel.



**Before Deployment**



**After Deployment**

**⚠ WARNING**

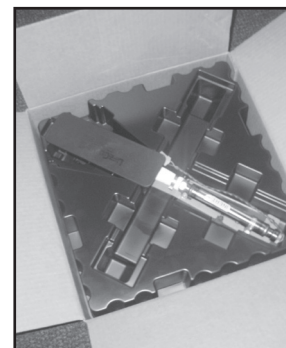
**DO NOT APPLY HEAT**

Temperatures over 85 C (185 F) Could cause the SRA unit to deploy.  
 The deployed unit could cause serious injury or death.

**⚠ WARNING**

**DISCONNECT THE BATTERY**

Make sure the battery disconnect is in the OFF position.  
 Disconnect and isolate the battery negative cable before beginning SRA installation. Failure to disconnect the battery could result in accidental airbag deployment and could cause serious injury or death.



**Figure 1**

**INSTALLATION**

**Unpacking the SRA Unit (Figure 1)**

1. Remove unit from the main carton. There can be up to 2 units per carton.
2. If parts need to be returned, DOT regulation mandates that they must be returned in the original packaging. Retain the original carton.

**Product Identification**

1. Locate product identification label. This is located on the back side of the unit. **(Figure 2) Verify your unit is the proper PN/system for your configuration.**



**Figure 2**



\*80335\*

## Preparing the Seat for SRA Installation

1. Turn battery switch OFF and disconnect battery.
2. Make sure you are working on the outboard side of the seat.
3. Use the template on the last sheet of this Installation Manual to mark the upholstery.
4. Using a very sharp blade, make the 3 cuts as shown on attached template. The top and bottom horizontal cuts should be made between the two rows of stitches. **(Figures 3-4)**
5. Open the seat bolster from the back side (hook and loop tape seam) **(Figure 5)** and remove the piece of foam that occupies the space where the SRA will be located. **DO NOT FOLD FLAPS UNDER THE UPHOLSTERY FABRIC (BETWEEN FABRIC AND FOAM). FRONT FLAPS MUST BE GLUED TO THE SEAT FOAM.** 3M #74 adhesive must be used to glue the front flap to the bolster foam. Allow 1 minute for adhesive to become tacky. **(Figure 6)**



Figure 3



Figure 4



Figure 5



Figure 6

## Mounting the SRA Unit - High Back Seat

1. Turn battery switch OFF and disconnect battery.
2. Slide wire harness followed by the module through the hole in the upholstery. **(Figures 7-8)**
3. Position the unit in place.
4. Slide the unit down then up to engage the ramped hook **(Figure 9)** to the seat tab.
5. Make sure wiring harness is free and not pinched.

**DO NOT MAKE WIRING HARNESS CONNECTION TO UNIT AT THIS TIME.**

6. Align the mounting holes and install the proper supplied mounting hardware. **(Figure 10)** (1/4-20 Grade 5 Fastener)
7. Tighten mounting bolt to the specified torque. **(Figure 12)**
8. Insert filler foam as shown in **Figure 13**.
9. Close the bolster by re-attaching the hook and loop tape seam.
10. If properly installed, the airbag cover should be flush and snug to the upholstery on all four sides. **(Figure 14)**
11. Verify that SRA cover is flush with seat upholstery.



Figure 7



Figure 8

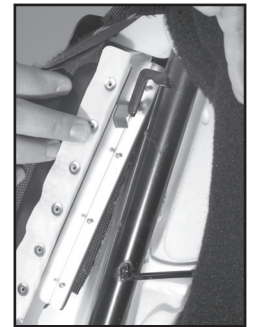


Figure 9



Figure 10

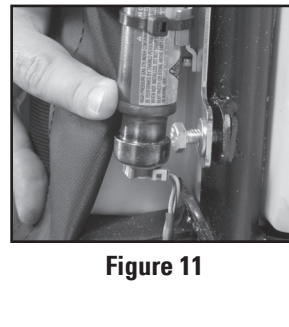


Figure 11



Figure 12

## Mounting the SRA Unit - SCBA Seat

1. Turn battery switch OFF and disconnect battery.
2. Slide wire harness followed by the module through the hole in the upholstery. **(Figure 7-8)**
3. Position the unit in place.
4. Slide the unit up then down to engage the ramped hook to the seat tab.
5. Make sure wiring harness is free and not pinched.

**DO NOT MAKE WIRING HARNESS CONNECTION TO UNIT AT THIS TIME.**

6. Align the mounting holes and install the proper OEM supplied mounting hardware. (1/4-20 Grade 5 Fastener)
7. Tighten mounting bolt to the specified torque.
8. Close the bolster by re-attaching the hook and loop tape seam.
9. If properly installed, the airbag cover should be flush and snug to the bolster upholstery on all four sides.
10. Verify that SRA cover is flush with seat upholstery.



Figure 13



Figure 14

## Electrical Connection and Test

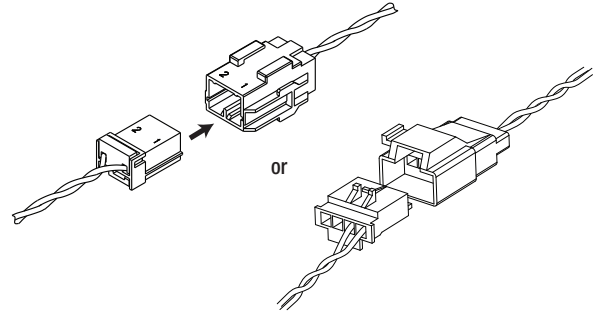
1. Turn battery switch OFF and disconnect battery.
2. Make connection between cab wiring harness and SRA. (**Figure 15**)
3. Verify that plug and connector are latched together.

### Important: Final System Inspection

1. Verify the SRA cover is flush with seat upholstery. A gap indicates improper installation.
2. Verify that the electrical connection has been made and that the connector bundle is tucked and properly secured.

**Important:** The following steps **MUST** be performed prior to connecting the battery negative terminal cable:

3. Lower vehicle side window.
4. Turn the ignition key/vehicle switch to ON position.
5. **EXIT VEHICLE AND ENSURE NO ONE IS IN VEHICLE AND EVERYONE IS CLEAR OF OCCUPANT PROTECTIVE DEVICES.**
6. After verifying no one is inside the vehicle, connect the battery negative terminal cable. Turn the battery disconnect switch to the ON position.
7. The SRS Fault Light on the dashboard should illuminate and then go out within 6-10 seconds.



**Figure 15**

### **⚠ WARNING**

**If warning light remains on, the system must be diagnosed for sensor faults and/or improper connections. Failure to do so could cause serious injury or death.**

### **⚠ WARNING**

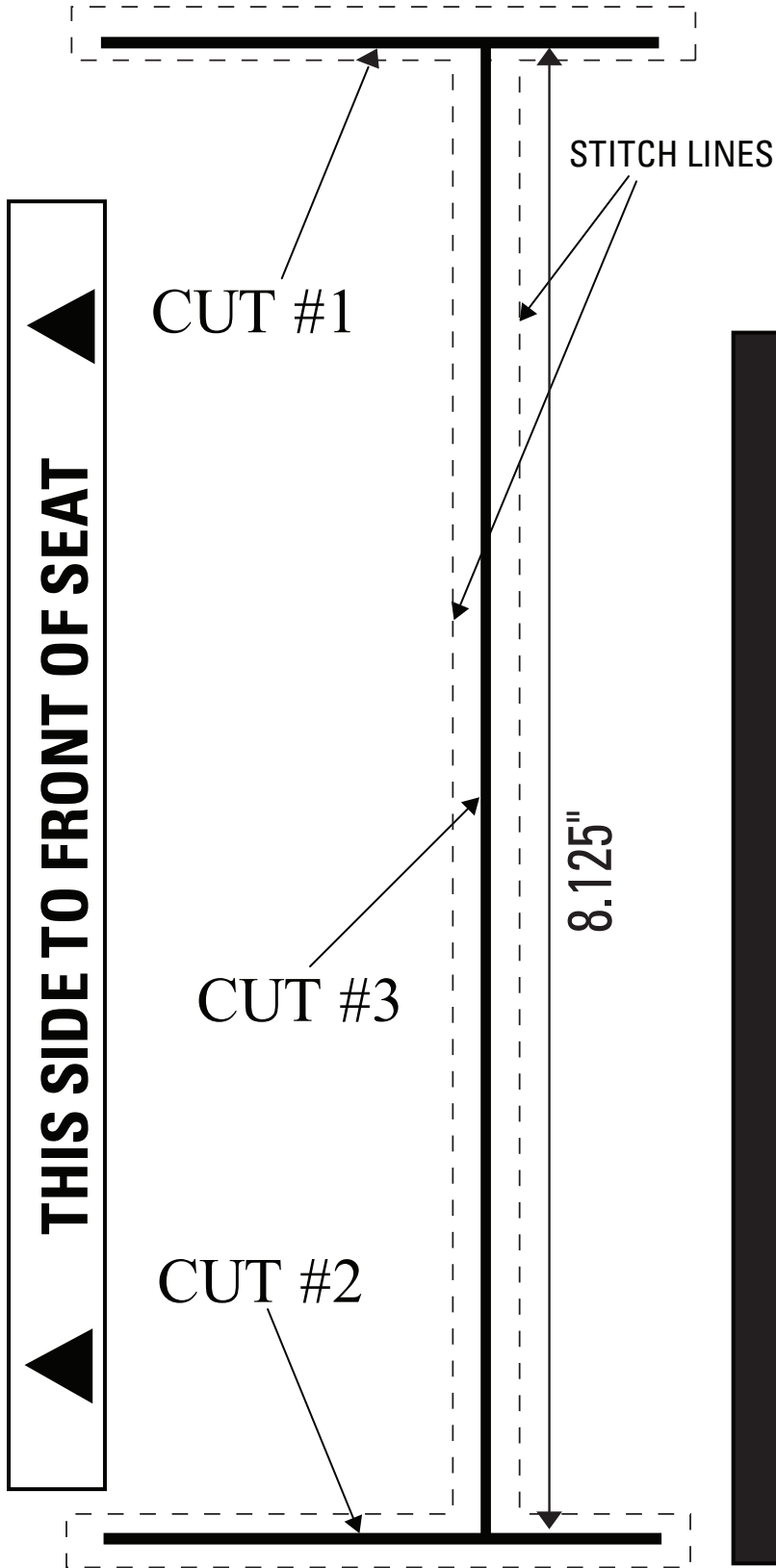
**Failure to follow and perform final system inspection steps could cause serious injury or death.**

### **Important:**

This information is not all-inclusive and will not cover every seat and vehicle configuration. Installer shall have sole responsibility for proper selection, application, installation and testing of the seat in accordance with FMVSS 207, 208 and 210 as amended, or any other applicable or additional specification such as for use outside the U.S., and for providing instructions to the ultimate end user concerning use and periodic inspection and maintenance of the SRA unit and seat belt system.

# SRA SEAT TEMPLATE

photo copy at 100% to use



**THIS TEMPLATE TO SCALE**

**Cut #1 to Cut #2 dimension is 8.125"**

**VERIFY SCALE AND USE AS GUIDE TO INSTALL SRA.**

