

5. INSERT CYLINDER INTO SMARTDOCK

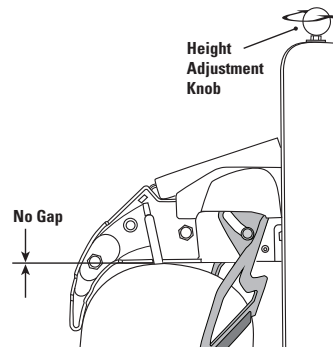
You are now ready to insert the SCBA cylinder into the SmartDock and complete the adjustment procedure.

- Place the SCBA cylinder valve into the SmartDock valve retaining tab.
- Push the top of the SCBA cylinder into the open SmartDock head, which will automatically close once inserted far enough.

Note: Insertion will become easier after final adjustments have been made.

6. ADJUST HEAD HEIGHT

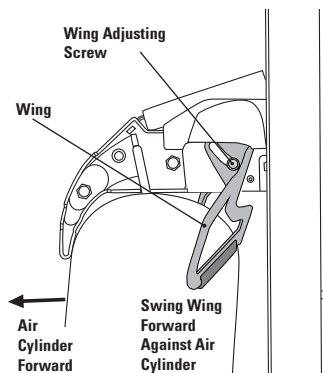
During normal operation, the SmartDock head should just touch the top of the SCBA air cylinder. Adjust the head height by turning the height adjustment knob counterclockwise to lower the head until the gap between the top of the SCBA air cylinder and the bottom of the SmartDock head is eliminated. The top of the SCBA air cylinder should just be touching the bottom of the SmartDock head.



7. FINAL "WING" ADJUSTMENT

The SmartDock "wing" holds the SCBA air cylinder in the proper orientation and helps close the head when inserting the SCBA cylinder into the SmartDock.

Holding the SCBA air cylinder forward against the two front claws, swing the wing forward until it touches the SCBA air cylinder, and then tighten the wing adjusting screws to 30 N-m.



imminet.com
866-765-5835



IMMI®

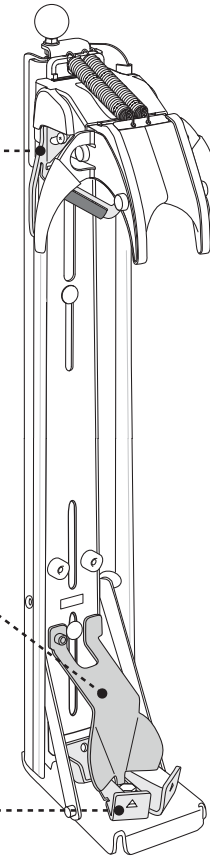
INSTALLATION INSTRUCTIONS

SMARTDOCK VALVE RETAINING TAB & WING REPLACEMENT

Wing Bracket
PN923590

Guide Plate
PN916567

Valve Retaining Tab
PN924126



⚠ WARNING

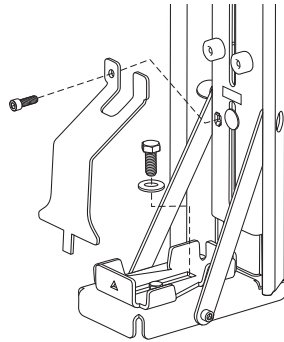
Failure to install, maintain and use SmartDock in accordance with the Installation User's Guide and those provided by the Vehicle Manufacturer can result in serious injury or death.

TOOLS REQUIRED

- T45 Torx Plus socket or key
- 3/16 hex sockets and hex keys (Allen wrench)
- 9/16 inch socket
- Torque wrench capable of reading from 8 to 30 ft*lbs (100 to 360 in*lbs)

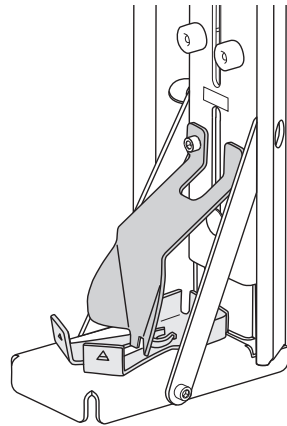
1. REMOVE OLD VALVE RETAINING TAB

- Remove the 1/4-20 Cap Screw allowing for the guide plate to become unfastened. Place the 1/4-20 Cap Screw and Guide Plate to the side of the SmartDock unit.
- Using a torque wrench and a 9/16" socket, disassemble the Valve Retaining Tab by removing the 3/8-16 Bolt & Washer.



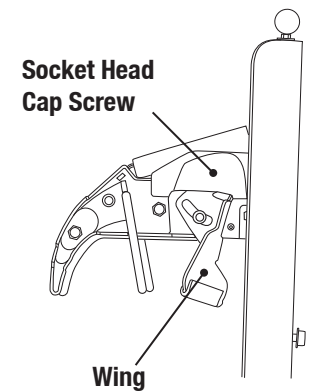
2. INSTALL NEW COMPONENTS

- Re-mount the new Valve Retaining Tab to the bottom plate using the 3/8-16 hex bolt and washer as shown. Leave the 3/8-16 hex bolt loose enough for the Valve Retaining Tab to slide along the smaller hex head bolt on the bottom plate.
- Place the new Guide Plate in position by aligning the tab into the slot in the bottom plate. Do not fasten the Guide Plate down at this time.
- To ensure a proper fit with the Scott, Draeger, Survivair, or Speria SCBA valve, place the cylinder valve in this area as you would normally insert the cylinder into the SmartDock. Relocate the Valve Retaining Tab so there is about 1/4" clearance with the cylinder valve.
- Keeping the Valve Retaining Tab in this same location, remove the SCBA and Guide Plate.
- Secure the Valve Retaining Tab by torquing the 3/8-16 hex bolt to 280 in*lbs (23 ft*lbs).
- Reinstall the new Guide Plate like before, but this time install the 1/4-20 socket head cap screw as shown and torque to 100 in*lbs (8 ft*lbs).



3. REMOVE OLD "WINGS"

- Using a T45 Torx Plus key, remove the two Socket Head Cap Screws that are located in the arched groove (see image for reference). Place the bolts to the side as they will be used later.
- With the two wings no longer fastened to the product, remove them from the unit. It may be necessary to pull outward on the black plastic cap in order to have enough clearance for the wings to come free.



4. INSTALL NEW "WING"

- Install the single piece wing by sliding the "U-shaped members" around the nuts located under the black plastic cap.
- Holding the "wing" in place, begin fastening the Socket Head Cap Screw with your opposite hand.
- Repeat by starting the other Socket Head Cap Screw on the opposite side.

CAUTION

SmartDock claw assembly uses high spring force to open and close. Use caution and avoid potential pinch points when operating claw assembly manually.