

- J3
1. CRUISE RES N.O.
 2. CRUISE RES N.C.
 3. CRUISE SET N.O.
 4. CRUISE RES N.C.
 5. CRUISE ON/OFF N.O.
 6. CRUISE ON/OFF N.C.
 7. CRUISE COMMON
 8. N.C.
 9. ENGINE BRK 1
 10. ENGINE BRK COM
 11. ENGINE BRK 2
 12. CLUTCH SWITCH
 13. ENGINE BRK ON/OFF
 14. ENGINE BRK ON/OFF

- J2
1. HORN
 2. MKR LMP OFF
 3. MKR LMP ON
 4. MKR LMP POWER
 5. HDLMP OFF
 6. HDLMP ON
 7. HDLMP PWR
 8. HDLMP PWR

- J1
1. IPX SIGNAL
 2. IPX SIGNAL GROUND
 3. PWR GROUND
 4. IGNITION
 5. +12 VOLT PWR
 6. +12 VOLT PWR

- J4
1. IPX SIGNAL
 2. IPX GROUND
 3. PNL LTS GROUND
 4. PNL LTS POWER

DIM	PL	ENG	MM	LTR	DESCRIPTION	DATE
X.		.060	1.524	A	RELEASED	8-26-96
.X		.030	.762	B	ADDED DIMS	12-12-02
.XX		.010	.254	C	Conformance	11-06-08
.XXX		.005	.127			
ANGLES $\pm 2^\circ$						

ELECTROLESS NICKEL EMI/RFI SUPPRESSION COATING
REQUIRED ON HOUSING

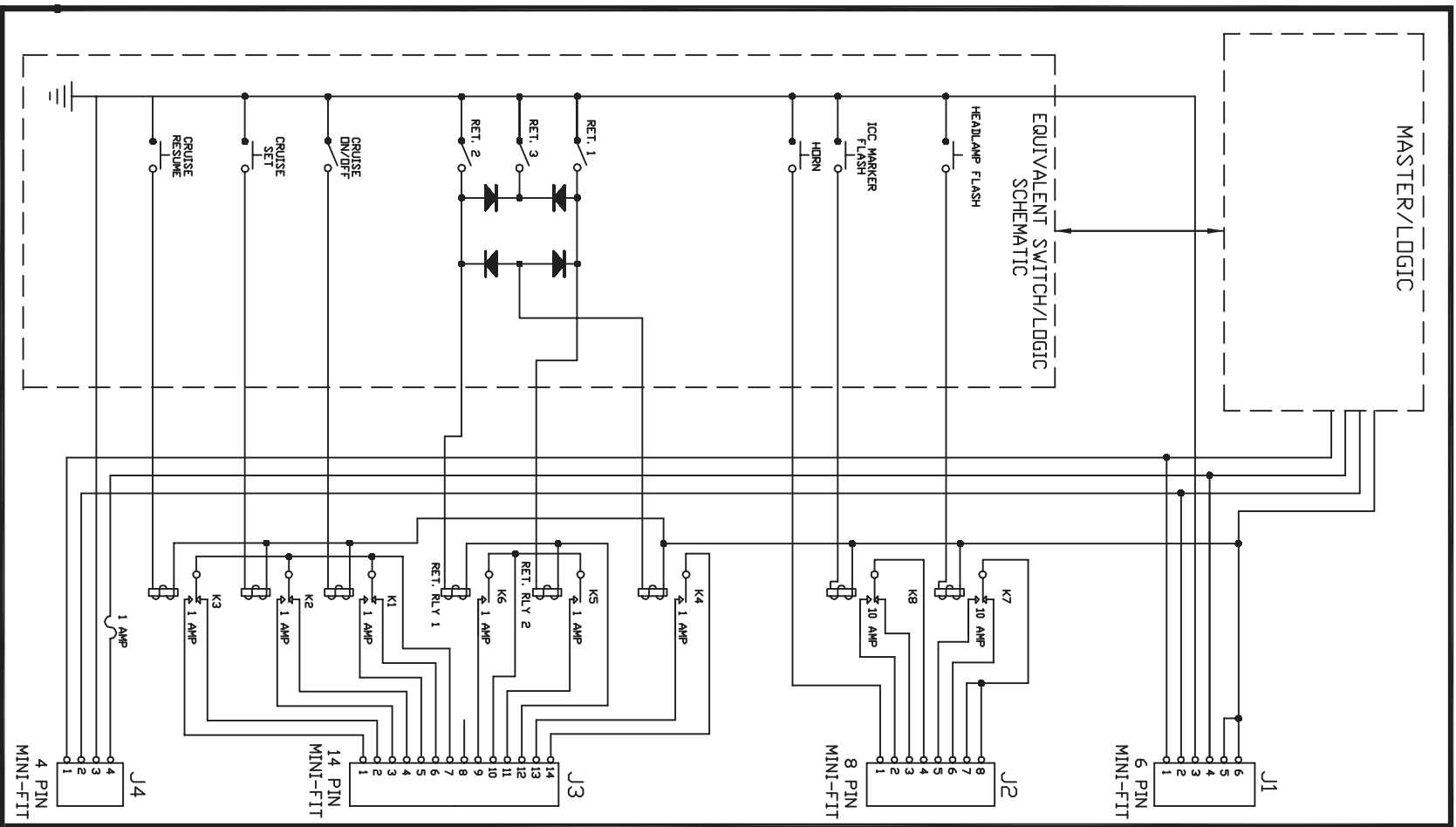
PRINTED CIRCUIT BOARD TO BE CONFORMALLY COATED

VEHICLE IMPROVEMENT PRODUCTS INC.

DRAWN BY DR	TITLE IPX MASTER	FILE NO. 00585
DATE 8-19-96	SCALE NONE	DRAWING NO. 000585-F1V-00

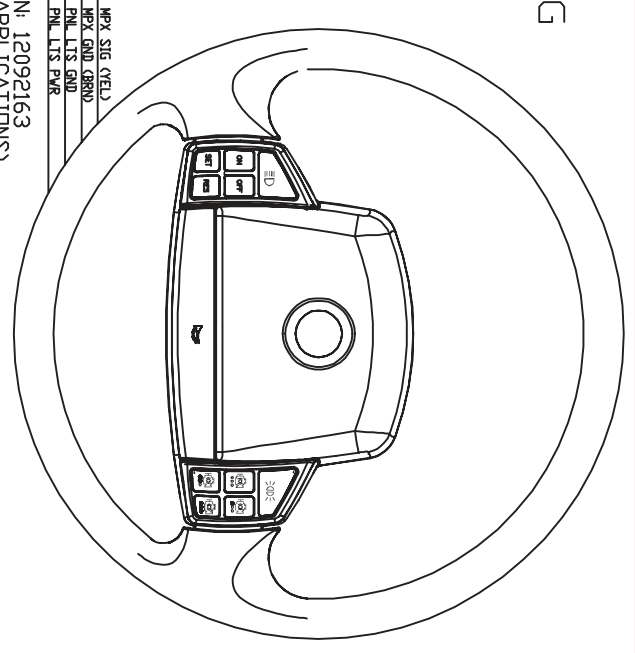
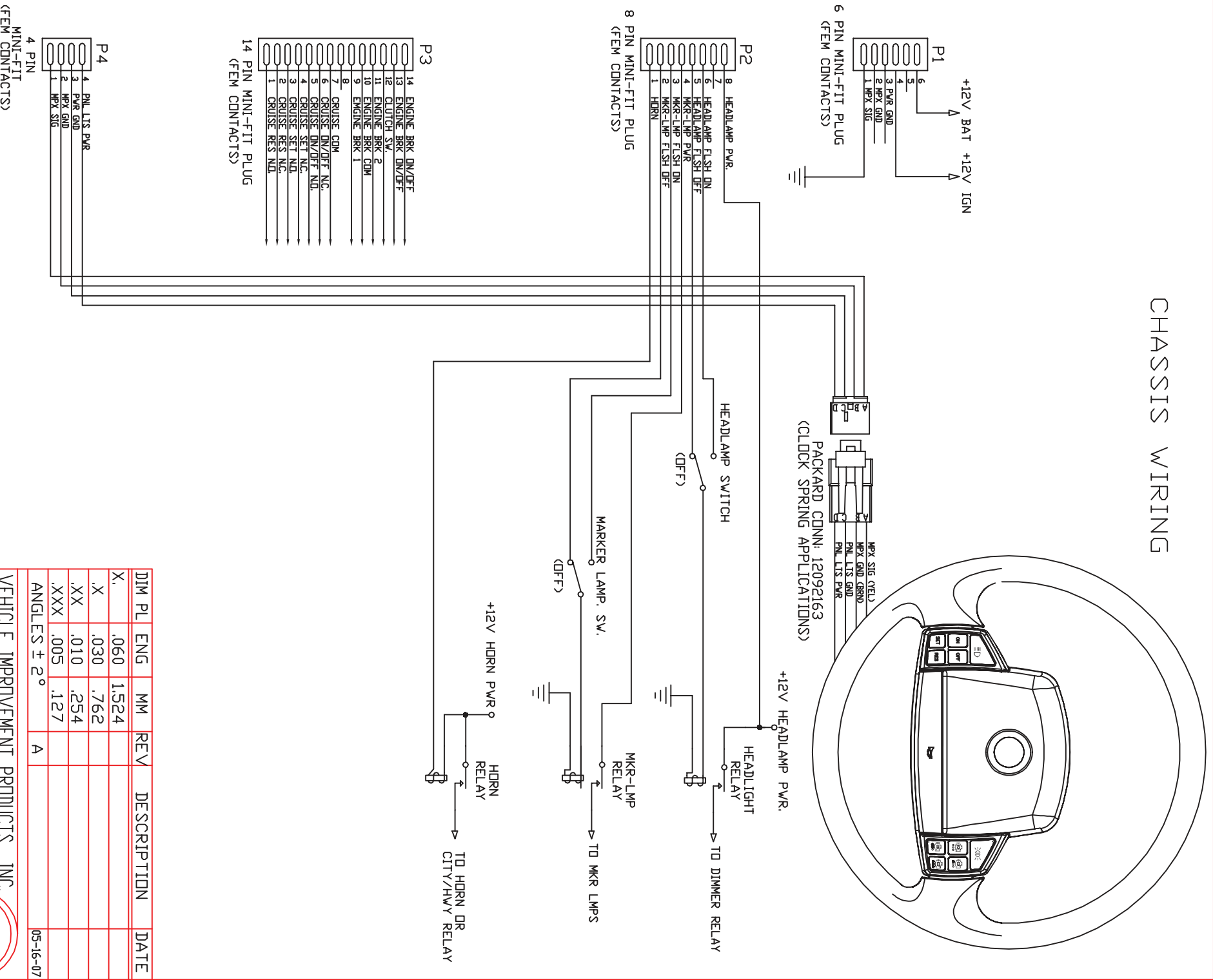
151 S. RAM RD. ANTIOCH, IL USA

SMARTWHEEL CONTROL MODULE VIP SM105



NOTES:
 A THE CONTROLLER IS DESIGNED TO MOUNT IN THE PASSENGER COMPARTMENT OF THE VEHICLE. IT MUST NOT BE EXPOSED TO THE HIGHER OPERATING TEMPERATURES AND MOISTURE LEVELS TYPICAL OF THE ENGINE COMPARTMENT.
 B RELAYS ARE SHOWN IN DE-ENERGIZED STATE. SWITCHES ARE SHOWN IN OFF OR OPEN STATE.

CHASSIS WIRING



DIM	PL	ENG	MM	REV	DESCRIPTION	DATE
X.	.060	1.524				
X.	.030	.762				
.XX	.010	.254				
.XXX	.005	.127				
ANGLES ± 2°						A
						05-16-07

VEHICLE IMPROVEMENT PRODUCTS INC.
 DRAWN BY: DLK
 TITLE: MULTIPLEX WIRING DIA.
 DATE: 05-16-2007
 SCALE: NONE
 DRAWING NO.: 001698-E0V-00
 151 S. RAM RD. ANTIPOCH, IL USA

