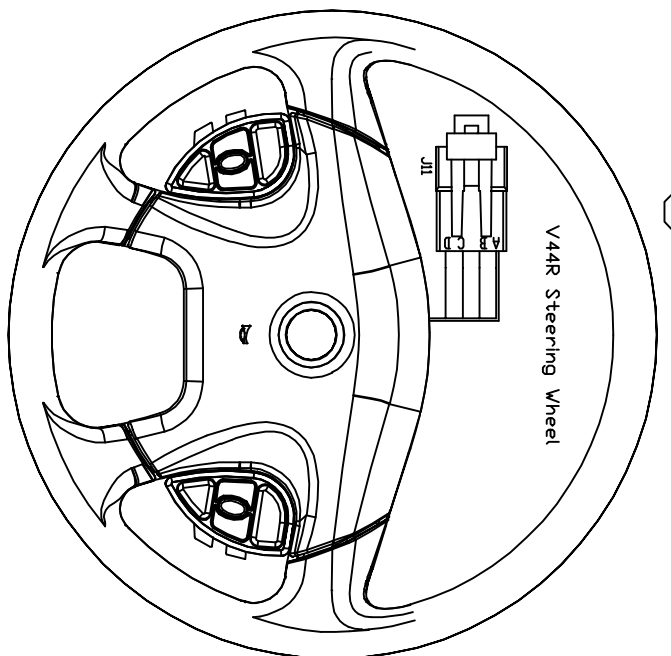
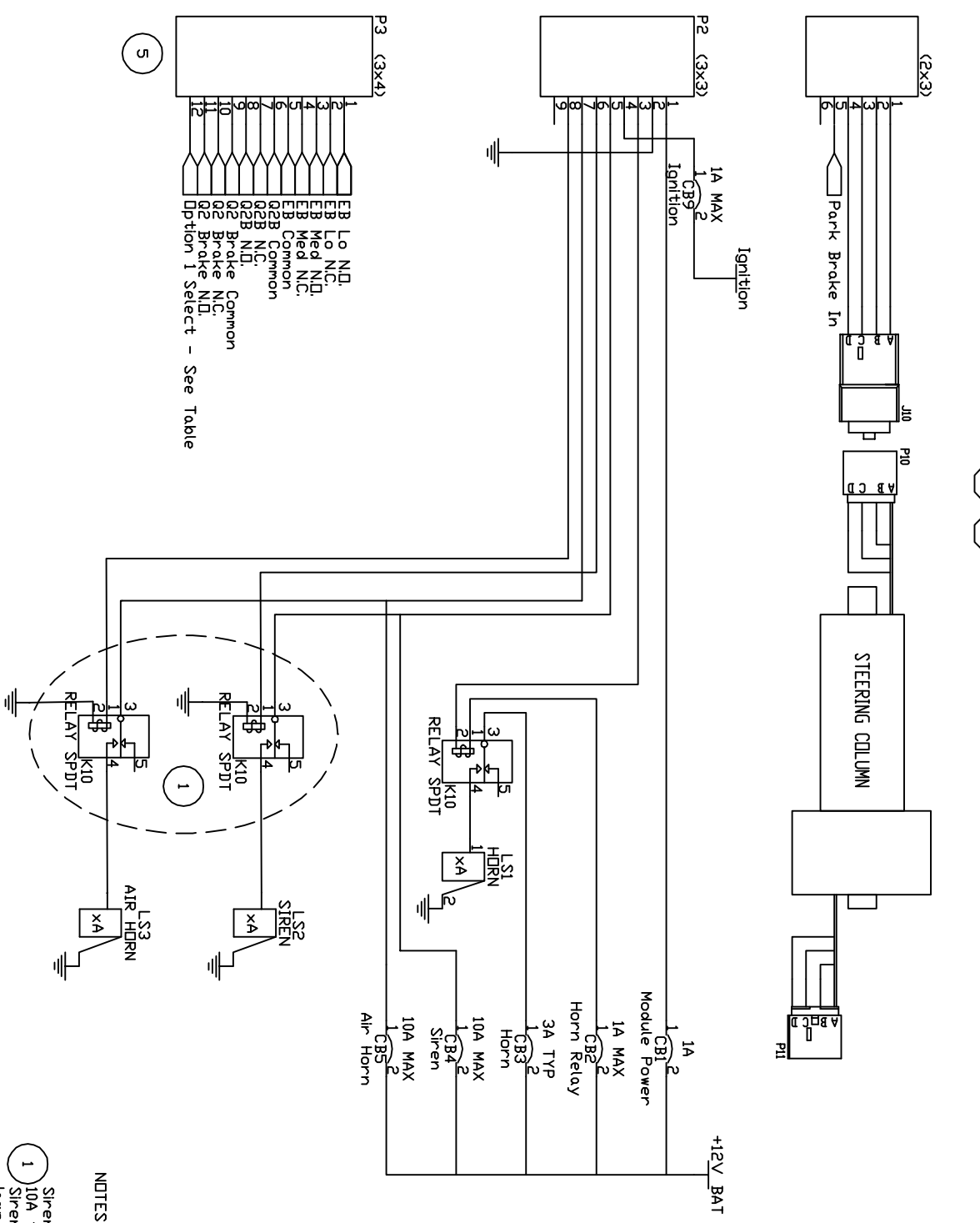
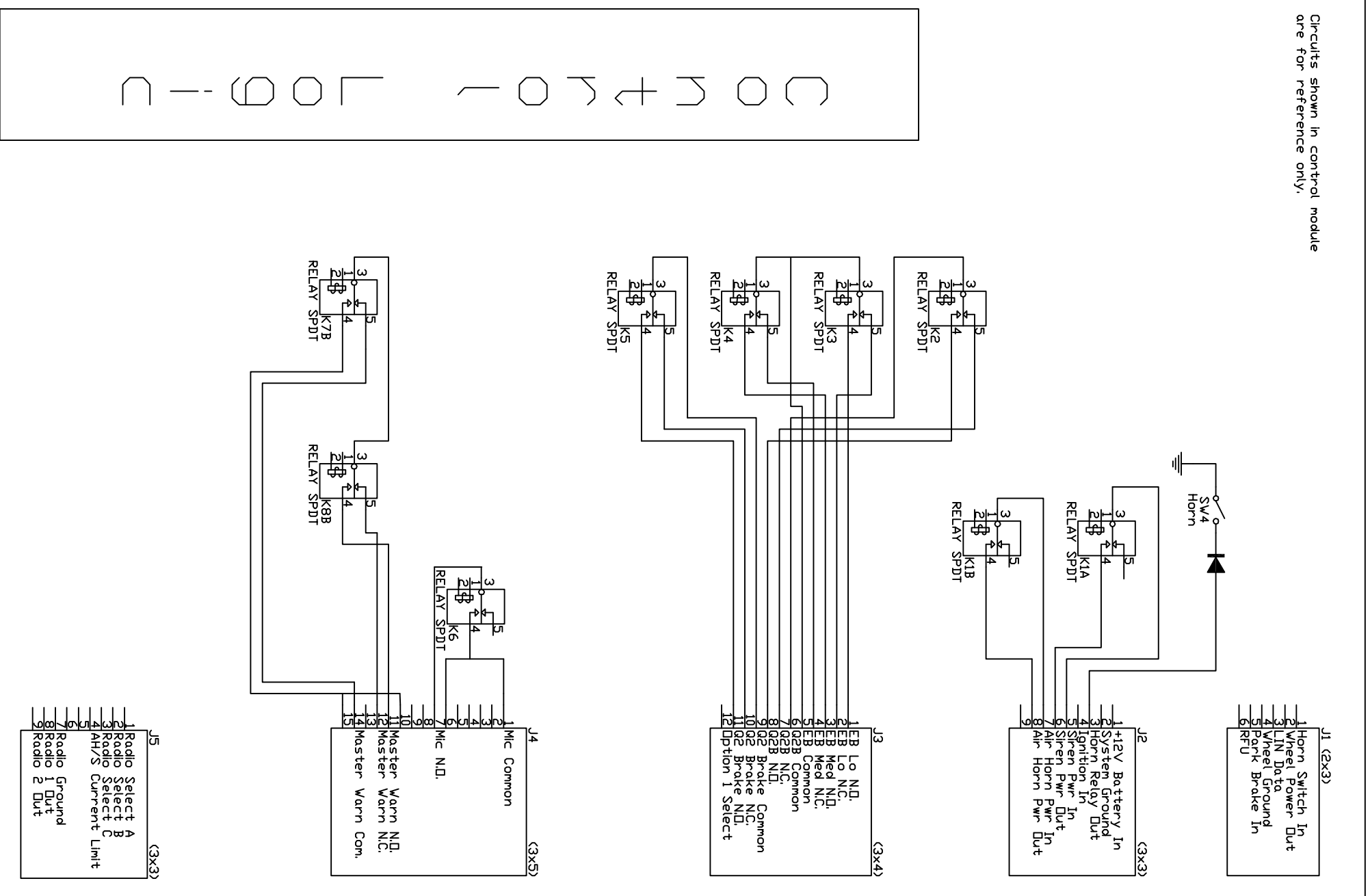


# SM221 Control Module

# Suggested Chassis Wiring

Circuits shown in control module are for reference only.

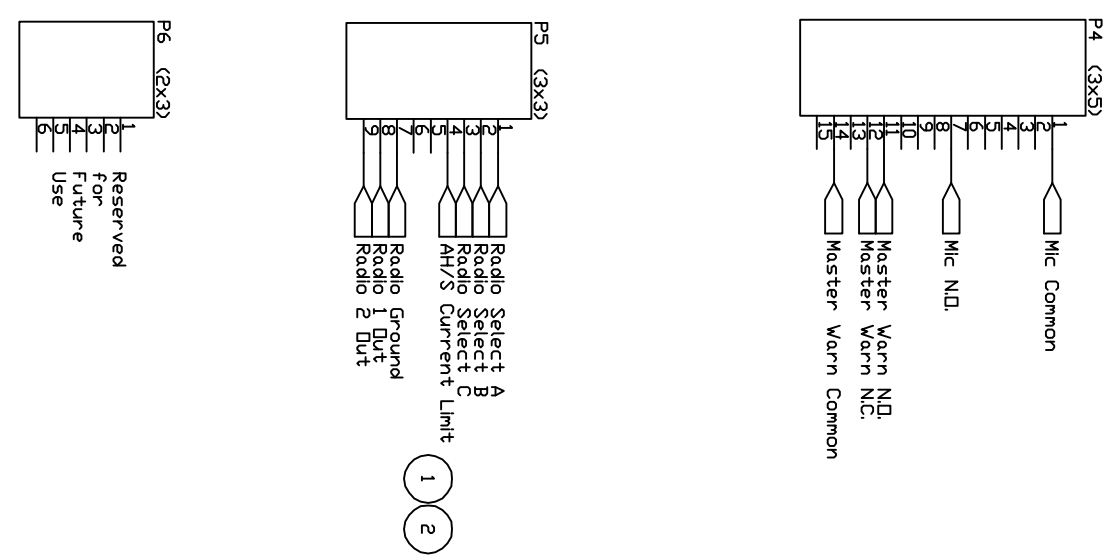


### NOTES

- Siren and Air Horn relays may be omitted if each respective load is controlled by a separate relay. The current limit is shown on the label of lamps is as shown.
- Radio connection and operation information is provided as-is with no guarantee of function for any given radio. Radio manufacturers' specifications are to be followed. It is the responsibility of the installer to verify the functionality of any given radio with this system. The installer assumes all liability for any damage to control module, radio, etc.
- The control module is designed to mount in the passenger compartment of the vehicle. The rated operating temperature range is -40 to +85 degrees C. The control module must not be exposed to the higher operating temperatures and moisture levels typical of the engine compartment or exposed areas of the vehicle.
- Appropriate wire selection, proper wire and circuit protection is the responsibility of the installer. Undeclared connections to controller are rated for 1A max.
- Option selections are read on rising ignition.

OPTION	DESCRIPTION
RADIO GROUND	1.5 MM PLUG TIP
RADIO 1 DNT	1.5 MM PLUG TIP
RADIO 2 DNT	1.5 MM PLUG RING
ENGINE MAGNETIC INTERFERENCE	RAD SEL AIRAD SEL, BRAD SEL C

OPTION	DESCRIPTION
Option 1 Select	Open Diagnostic Mode
Option 2 Select	Normal Mode
Option 3 Select	Reserved



Control Module Connectors (chassis side)  
 P1 AMP 1-480706-0 Housing  
 P2 AMP 1-480706-0 Housing  
 P3 AMP 1-480708-0 Housing  
 P4 AMP 1-480710-0 Housing  
 P5 AMP 585893-9 50-78 AWG socket contact  
 P6 Tyco 127169-1  
 P7 Tyco 770986-1 22 AWG socket contact  
 P7/P8/P9 0.250" insulated female quick disconnect, 20 Amp

COLUMN CONNECTOR: AMP 1-480708-0 Housing  
 PACKAGED 12047581 AWG 20 Terminal

CONTROL MODULE

THIS DRAWING AND ITS INFORMATION IS CONFIDENTIAL. IT IS THE PROPERTY OF VIP INC., AND MUST NOT BE MADE PUBLIC OR USED IN ANY WAY DETRIMENTAL TO THE INTERESTS OF VIP INC.

PART	DRW	DESCRIPTION	DATE
REV	REV		

DIM	PL	ENG	MM
X.	.060	1.524	
X.	.030	.762	
XX	.010	.254	
.XXX	.005	1.27	

ANGLE	±	DEG
A	00	Preliminary

DATE	BY	TITLE
11-29-2016	WIRING	DIAGRAM, SM221

SCALE	DRAWING NO.	FILE NO.
NONE	MPXV008	01778

VEHICLE IMPROVEMENT PRODUCTS INC.  
 ANTIDCH, IL USA (847)-395-7250

