

Frontal Crash Airbag Protection

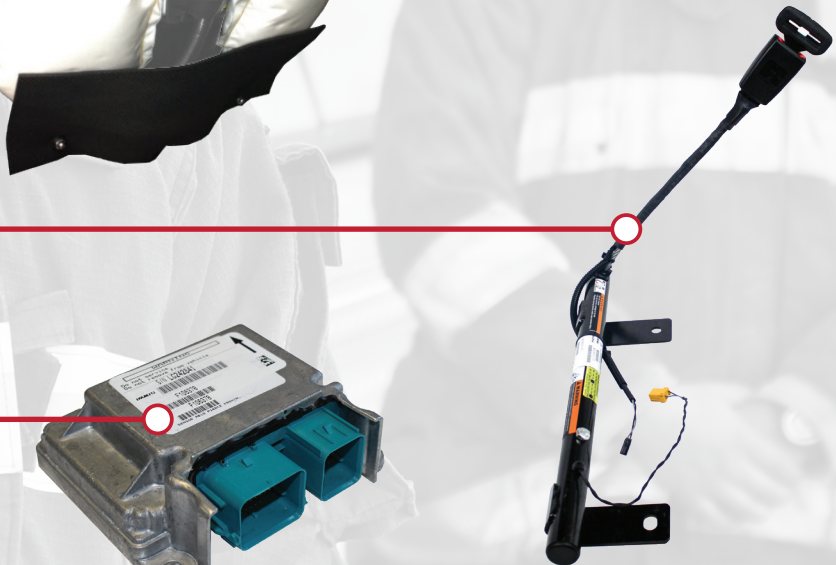
4Front Frontal Crash Airbag
Large surface area when deployed to protect head and neck



IMMI Steering Wheel with Integrated Airbag

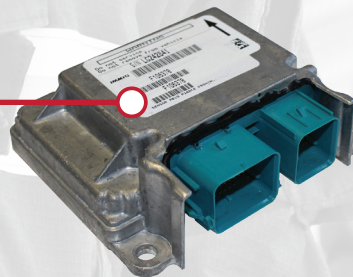


Knee Airbag*
Deploys to protect driver or passenger legs



Buckle Pretensioner System*
Tightens in the event of a crash

Sensor*
Triggers multiple safety devices



* Component will vary according to application

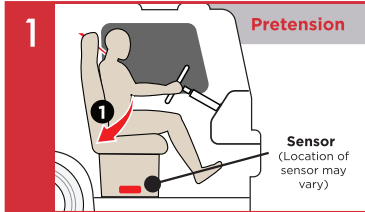
The second leading cause of death for firefighters on the job is accidents in their apparatus. When a head-on collision is the most likely kind of crash they'll face, frontal airbag protection is a must. IMMI's 4Front works in the blink of an eye to reduce the risk of death or serious injury.



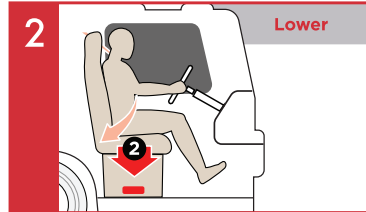
4Front - How It Works

When the sensor detects a frontal crash, three things happen to protect the firefighters onboard.

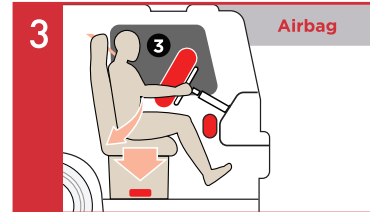
1. The seat belt pretensioner tightens to keep the firefighter securely in the seat.



2. Where applicable, the suspension seat drops to its lowest setting to increase survivable space and keep the firefighter away from the roof.



3. Frontal airbag deploys to cushion the head and neck and knee airbags inflate to protect driver or passenger legs.



Testing

The Center for Advanced Product Evaluation (CAPE®), is an award-winning, premier crash test facility. Built big to test big, CAPE specializes in large vehicle testing, including fire apparatus.

Aside from one of the largest barrier blocks in the world, CAPE is also home to a 90-degree rollover impact machine that leading fire apparatus and ambulance manufacturers use to evaluate and validate occupant protection systems in a rollover.



Barrier Block



Rollover Impact



Cab Integrity



Pyrotechnics

Availability

4Front is available on the following quality fire apparatus:

E-One, Ferrara, HME, KME, Pierce, Rosenbauer, Spartan, Sutphen

info@imminet.com

18881 IMMI Way
Westfield, IN 46074
317.896.9531
imminet.com



IMMI reminds you to always buckle up.



imminet.com