



STEERING THE WORLD

PRODUCT CATALOG



IMMI VIP
151 S. Ram Road
Antioch, IL 60002
847.395.7250

imminet.com/wheels
immiwheels@imminet.com



STEERING THE WORLD

imminet.com/wheels



- Since 1969, IMMI VIP has designed, manufactured, and marketed steering wheels, controls, and interior products for every commercial vehicle market on the road today
- Focused 100% on the unique demands of commercial vehicles
- Production facilities ready to serve customers ranging from low-volume custom manufacturers to high-volume OEM serial production
- Proudly Made in USA, serving customers around the world
- IATF 16949 Certified
- Wide range of off-the-shelf steering wheel models available to fit almost any vehicle on the planet
- Full engineering services available to design, test, and produce custom and bespoke steering wheels and controls

Visit imminet.com/wheels or email immiwheels@imminet.com for more information

Vehicle Improvement Products is now IMMI VIP

VIP + IMMI = OVER 100 YEARS OF INNOVATION, SAFETY, AND QUALITY

Established in 1961, IMMI is the global leader in commercial vehicle safety systems. A world-class manufacturer of seat belts, air bags, and complete seating systems for commercial vehicles, IMMI also offers a full range of static and dynamic testing capabilities at the Center for Advanced Product Evaluation (CAPE) in Westfield, IN.

Visit IMMI at imminet.com and CAPE at capetesting.com

VIP + IMMI = BRINGING SAFETY TO PEOPLE MORE THAN EVER BEFORE!

WHAT STEERS YOUR WORLD?

MARKETS SERVED



COMMERCIAL TRUCK



FIRE & RESCUE



MOTORCOACH & RV



SCHOOL BUS & TRANSIT BUS



CONSTRUCTION & AGRICULTURE



OFF-HIGHWAY & SPECIALTY



DEFENSE

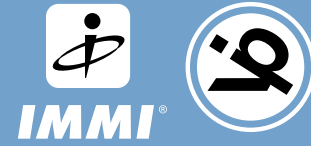


POWER SPORTS



UNCOMPROMISING QUALITY

STEERING WHEEL CONSTRUCTION



STANDARD WHEEL DESIGNS

Horn Button Or Center Cap

Available with or without horn functionality

Top Cap

Hub & Hub Attachments

Hubs available to fit any vehicle on the planet

Optional Column Shroud

Standard & custom designs available to cover steering column gap

Emblem (35mm)

Custom logos available

Base Steering Wheel

Formed/welded armature
Molded or wood grip

Optional Hub Spacer

Lifts wheel additional 1" off steering column

Horn Contact Plate

ADVANCED WHEEL DESIGNS

Horn Pad

Available with Integrated IMMI 4Front Airbag

Airbag Mounting System

Integrated Hub

Hubs available to fit any vehicle on the planet

Emblem (35mm or 46mm)

Custom logos available

Base Steering Wheel

Formed/welded armature
Molded grip

Optional Control Pods

Numerous standard and custom configurations available

GET A GRIP

STANDARD WHEEL OPTIONS



STANDARD MOLDED

FLEXIBLE VINYL (MOLDED PVC)

Feel Extra Firm Cushion	Durability Extreme
Texture Molded-In Texture	Other High Density High UV Resistance



POLYURETHANE MOLDED FOAM

Feel Standard Firm Cushion	Durability Very High
Texture Molded-In Texture	Other Moderate Density, Self-Skinning Foam



PREMIUM LEATHER

FULL LEATHER WRAP

Feel Premium Firm Cushion	Durability High
Texture Luxury Soft Full Grain Leather	Options Multiple Leather Colors & Custom Stitching Available



CUSTOM PATTERN & LEATHER WRAP

Feel Ultra Premium	Durability High
Texture Luxury Soft Leather & Simulated Woodgrain Finish	Options Multiple Woodgrains & Leather Colors Available



WOOD & CUSTOM

GENUINE POLISHED WOOD

Feel Premium Hardwood	Durability High
Texture Smooth Wood with Finger Grips	Options High Gloss Mahogany



CUSTOM GRAPHICS & LEATHER WRAP

Feel Premium & Custom	Durability High
Texture Luxury Soft Leather & Custom Graphic Finish	Options Multiple Leather Colors & Unlimited Graphics Available



CONTROL AT EVERY TURN

ADVANCED WHEEL OPTIONS



POLYURETHANE MOLDED FOAM

Feel
Standard Firm Cushion

Durability
Very High

Texture
Molded-In Texture

Other
Moderate Density, Self-Skinning Foam



FULL LEATHER WRAP

Feel
Premium Firm Cushion

Durability
High

Texture
Luxury Soft Full Grain Leather

Options
Multiple Leather Colors & Custom Stitching Available



CUSTOM PATTERN & LEATHER WRAP

Feel
Ultra Premium

Durability
High

Texture
Luxury Leather Simulated Woodgrain Simulated Carbon Fiber

Options
Unlimited Custom Patterns Available



MATTE BLACKWOOD
Modern, no-gloss medium-dark gray wood with visible graining | HY5

CHARCOAL CHERRY
Premium, high gloss dark gray wood with visible graining HY8

GLOSS BLACK
Sleek, high gloss solid painted finish with no visible graining HYB

STANDARD BURLWOOD
Classic, medium-brown non-linear woodgrain with a slight wine-colored tint | HY1

REGAL CHERRY
Similar to standard burl, but slight orange tint | HY7

OREGON BURL
Warm brown-tone burl woodgrain | HY2

ZEBRANO
Premium burgundy-brown woodgrain with dark, striking striped grain | HY6

AIRBAG INTEGRATION

V4 and V4S Wheels are available for integration with IMMI frontal airbags
Crash testing and deployment validation program required

VEHICLE INTERFACE OPTIONS

CAN (J1939)
SM300 Series Controllers

LIN
Direct from wheel

RELAY OUTPUT
SM200 Series Controllers

ANALOG
Direct from wheel (Non-Paddle Controls)

ULTIMATE CONTROL

CONTROL POD OPTIONS



The following are laser etched Control Pod graphic examples. Custom graphic options are available.

EXTERIOR LIGHTS

- HIGH BEAM FLASH
- MARKER LAMP FLASH
- FOG LIGHTS
- HIGH BEAMS ON
- HIGH BEAMS OFF

PHONE/NAV/INTERIOR

- NAVIGATION UP/DOWN
- HOME
- PHONE ANSWER/END
- FRONT/REAR INTERIOR LIGHTS
- SHADE UP/DOWN
- OK
- BACK

V4S available with up to 4 two-way paddles for added control

- Volume up/down or audio seek
- Wheel tilt/telescope control
- Pedal in/out adjustment
- CUSTOM OPTIONS AVAILABLE



WARNING CONTROL

- SIREN
- Q-SIREN ACTIVATION
- E. SIREN ACTIVATION
- SIREN OR AIR HORN
- SCENE LIGHTING
- MASTER WARNING LIGHTS
- Q-SIREN BRAKE
- SIREN SPEAKER UP/DOWN
- MIC/RADIO CONTROL

WINDSHIELD

- WINDSHIELD WASH
- INTERMITTENT WIPERS
- WIPERS HI/LO
- WIPERS ON/OFF
- WIPERS OFF

CRUISE CONTROL

- CRUISE ON
- CRUISE ON/OFF
- CRUISE SET
- CRUISE SET & ACCEL/DECEL
- CRUISE SET/RESUME & ACCEL/DECEL
- ACCEL
- DECEL
- CRUISE ACCEL/DECEL
- CRUISE RESUME
- CRUISE CANCEL
- CRUISE OFF

ENGINE CONTROL

- AUX BRAKE ACTIVATION
- AUX BRAKE LEVELS 1,2,3
- AUX BRAKE LEVELS 1,2
- TRANSMISSION SHIFT UP/DOWN
- AUX BRAKE OFF



ADVANCED WHEEL DESIGNS

VISION SERIES

ADAS-READY TECHNOLOGY

Haptic feedback, built into the grip, can be programmed for alerts in sync with or independent of the LED lights

LED displays are individually programmable and able to display any color



Flat-bottom design, allows easy ingress and egress

Shown above: polyurethane molded foam grip, SmartWheel controls: 10 function buttons LED display and haptic feedback integration

DIAMETER	16.7" 424mm
DEPTH W/O HUB	3.36" 92.2mm
GRIP OPTIONS	<ul style="list-style-type: none"> • Polyurethane Molded Foam • Leather Wrap
EMBLEM OPTIONS	<ul style="list-style-type: none"> • Integrated Horn Pad • Emblem: VIP Logo, Custom Logo, Horn Trumpet, or Blank • Emblem Sizes: Round 46mm
APPLICATION OPTIONS	<ul style="list-style-type: none"> • Available with V4-style control pods • Available with optional IMMI 4Front airbag mounting system • Standard or Custom Control Pods
PRIMARY MARKETS	<ul style="list-style-type: none"> COMMERCIAL TRUCK DELIVERY VAN SCHOOL & TRANSIT BUS FIRE & RESCUE DEFENSE

KEY FEATURES

Vision Technology is a suite of ADAS features available on any custom steering wheel design or off-the-shelf in the Vision Series

Base model No LEDs, haptics, or control pods

Mid-range models Control pods

Fully-outfitted models Leather-wrapped with full suite of LEDs, haptics, and control pods

Available add-on features include:

- Any of our full suite of **V4S control pod** options
- **Proprietary 2-way control module** pairing sends signals from the wheel to the vehicle AND receives/reacts to signals from the vehicles ADAS sensors
- **LED displays** are individually programmable and able to display any color
- **Haptic feedback**, built into the grip, can be programmed for alerts in sync with or independent of the LED lights



ADVANCED WHEEL DESIGNS

V4S SERIES

HEATED STEERING WHEEL



Woodgrain/Leather Grip: Fully heated through the leather portion of the grip
Full Leather or Polyurethane Grip: Fully heated around the entire grip perimeter

DIAMETER	18" 457mm
DEPTH W/O HUB	4.65" 122mm
GRIP OPTIONS	<ul style="list-style-type: none"> • Polyurethane Molded Foam • Leather Wrap • Simulated Woodgrain/Leather • Simulated Carbon Fiber/Leather
EMBLEM OPTIONS	<ul style="list-style-type: none"> • Integrated Horn Pad • Emblem: VIP Logo, Custom Logo, Horn Trumpet, or Blank • Emblem Sizes: Round 46mm or 35mm with Chrome Trim
APPLICATION OPTIONS	<ul style="list-style-type: none"> • IMMI 4Front Driver Airbag-Ready • Standard or Custom Control Pods • Multiple Electrical Interface Options
PRIMARY MARKETS	<ul style="list-style-type: none"> COMMERCIAL TRUCK FIRE & RESCUE MOTORCOACH & RV SCHOOL & TRANSIT BUS

KEY FEATURES

- Fully integrated heat controller requires no additional wiring
- Proprietary design and manufacturing process
- Controls may be steering wheel-mounted or dash-mounted
- **Now available in molded polyurethane grip**
- Patent pending

KEY TECHNICAL SPECIFICATIONS

- Grip Temperature: 35°C ±3° (95°F ±5°)
- Nominal voltage: 12V
- Max current: 4.5A
- Connector: 105307-1206 (Molex)



ADVANCED WHEEL DESIGNS

V4S SERIES

TRITOUCH STEERING WHEEL



DIAMETER	18" 457mm
DEPTH W/O HUB	4.65" 118mm
GRIP OPTIONS	<ul style="list-style-type: none"> • Polyurethane Molded Foam • Leather Wrap • Simulated Woodgrain/Leather • Simulated Carbon Fiber/Leather
EMBLEM OPTIONS	<ul style="list-style-type: none"> • Integrated Horn Pad • Emblem: VIP Logo, Custom Logo, Horn Trumpet, or Blank • Emblem Sizes: Round 46mm or 35mm with Chrome Trim
APPLICATION OPTIONS	<ul style="list-style-type: none"> • IMMI 4Front Driver Airbag-Ready • Standard or Custom Control Pods • Multiple Electrical Interface Options
PRIMARY MARKETS	<ul style="list-style-type: none"> COMMERCIAL TRUCK FIRE & RESCUE MOTORCOACH & RV SCHOOL & TRANSIT BUS

Shown above: simulated carbon fiber and full-grain leather grip
SmartWheel TriTouch controls: 19 driver-facing buttons + four 2-way side paddles (27 total functions)

KEY FEATURES

TriTouch Control = Safety

Increases safety in large vehicles by bringing controls that are often at a reach point on a dashboard to the fingertips of your driver. Allows an OEM to add a level of functionality not available on any other commercial vehicle steering wheel

- Allows maximum function count of 27 (19 driver-facing buttons + four 2-way side paddles)
- Customer-specific graphics
- Options for LIN- or CAN-based communication protocols
- Compatible with IMMI VIP's heated steering wheel function
- Compatible with IMMI 4Front Driver Airbag Module



ADVANCED WHEEL DESIGNS

V4S SERIES



DIAMETER	18" 457mm
DEPTH W/O HUB	4.65" 118mm
GRIP OPTIONS	<ul style="list-style-type: none"> • Polyurethane Molded Foam • Leather Wrap • Simulated Woodgrain/Leather
EMBLEM OPTIONS	<ul style="list-style-type: none"> • Integrated Horn Pad • Emblem: VIP Logo, Custom Logo, Horn Trumpet, or Blank • Emblem Sizes: Round 46mm or 35mm with Chrome Trim
APPLICATION OPTIONS	<ul style="list-style-type: none"> • IMMI 4Front Driver Airbag-Ready • Standard or Custom Control Pods • Multiple Electrical Interface Options
PRIMARY MARKETS	<ul style="list-style-type: none"> COMMERCIAL TRUCK FIRE & RESCUE MOTORCOACH & RV SCHOOL & TRANSIT BUS

Shown above: simulated burl wood and full-grain leather grip
SmartWheel controls: 10 function buttons + 4 two-way paddles (18 total functions)

DESIGN OPTIONS

Leather Finishes

- Textured Black
- Textured Brown
- Custom Colors Available

Custom Patterns

- Burl Wood (Standard)
- Matte Blackwood
- Charcoal Cherry
- Gloss Black
- Simulated Carbon Fiber





ADVANCED WHEEL DESIGNS

V4 SERIES



Shown above: premium full-grain leather grip

DIAMETER	18" 457mm
DEPTH W/O HUB	4.65" 118mm
GRIP OPTIONS	<ul style="list-style-type: none"> • Polyurethane Molded Foam • Leather Wrap • Simulated Woodgrain/Leather
EMBLEM OPTIONS	<ul style="list-style-type: none"> • Integrated Horn Pad • Emblem: VIP Logo, Custom Logo, Horn Trumpet, or Blank • Emblem Sizes: Round 46mm or 35mm with Chrome Trim
APPLICATION OPTIONS	<ul style="list-style-type: none"> • IMMI 4Front Driver Airbag-Ready • Multiple Horn Connection Options
PRIMARY MARKETS	<ul style="list-style-type: none"> COMMERCIAL TRUCK FIRE & RESCUE MOTORCOACH & RV SCHOOL & TRANSIT BUS



STANDARD WHEEL DESIGNS

VALOR SERIES



Shown above: polyurethane molded foam grip with black spokes

DIAMETER	16" 406mm
DEPTH W/O HUB	1.82" 46mm
GRIP OPTIONS	<ul style="list-style-type: none"> • Polyurethane Foam • Leather Wrap
EMBLEM OPTIONS	<ul style="list-style-type: none"> • Center Cap or Horn Button • Emblem: VIP Logo, Custom Logo, Horn Trumpet, or Blank • Emblem Size: 35mm
APPLICATION OPTIONS	<ul style="list-style-type: none"> • Military-Spec Quick Release Hub
PRIMARY MARKETS	<ul style="list-style-type: none"> COMMERCIAL TRUCK CONSTRUCTION & AGRICULTURE OFF-HIGHWAY & SPECIALTY DEFENSE POWER SPORTS

DESIGN OPTIONS

Leather Finishes	Custom Patterns
Textured Black	Burl Wood (Standard)
Textured Brown	Matte Blackwood
Custom Colors Available	Charcoal Cherry
	Gloss Black
	Simulated Carbon Fiber



SPOKE DESIGN OPTIONS

Spoke Finishes	Spoke Styles
Black Powdercoat	Solid Exposed Steel
Silver Powdercoat	Slotted Exposed Steel
	Solid Exposed Aluminum





VANISH SERIES



DIAMETER	18" 457mm	20" 508mm
DEPTH W/O HUB	2.56" 66mm	
GRIP OPTIONS	<ul style="list-style-type: none"> • Flexible Vinyl • Polyurethane Foam (18" only) • Leather Wrap • Woodgrain & Leather (18" only) • Custom Graphics & Leather 	
EMBLEM OPTIONS	<ul style="list-style-type: none"> • Center Cap or Horn Button • Emblem: VIP Logo, Custom Logo, Horn Trumpet, or Blank • Emblem Size: 35mm 	
PRIMARY MARKETS	<ul style="list-style-type: none"> ■ COMMERCIAL TRUCK ■ FIRE & RESCUE ■ MOTORCOACH & RV ■ SCHOOL & TRANSIT BUS ■ CONSTRUCTION & AGRICULTURE ■ OFF-HIGHWAY & SPECIALTY ■ DEFENSE 	

Shown above: polyurethane molded foam grip with brushed nickel plate spokes

SPOKE DESIGN OPTIONS	
Spoke Finishes	Spoke Styles
<ul style="list-style-type: none"> Black Powdercoat Brushed Nickel Plated Chrome Plated 	<ul style="list-style-type: none"> Slotted Exposed Steel



VENTURE SERIES



DIAMETER	18" 457mm
DEPTH W/O HUB	1.70" 43mm
GRIP OPTIONS	<ul style="list-style-type: none"> • Polyurethane Foam (18" only) • Leather Wrap (18" only) Optional red stitching available • Genuine Polished Mahogany • Painted Wood (18" only)
EMBLEM OPTIONS	<ul style="list-style-type: none"> • Center Cap or Horn Button • Emblem: VIP Logo, Custom Logo, Horn Trumpet, or Blank • Emblem Size: 35mm
PRIMARY MARKETS	<ul style="list-style-type: none"> ■ COMMERCIAL TRUCK ■ FIRE & RESCUE ■ MOTORCOACH & RV ■ SCHOOL & TRANSIT BUS

Shown above: full-grain leather grip with chrome slotted spokes
Detail shown: optional red stitching

DESIGN OPTIONS	
Genuine Wood Grip	Spoke Styles
<ul style="list-style-type: none"> Polished Mahogany Custom Paint Options Available 	<ul style="list-style-type: none"> Solid Embossed Steel (20" Only) Slotted Exposed Steel
Spoke Finishes	
<ul style="list-style-type: none"> Chrome Plated 	





VANGUARD SERIES




DIAMETER	14" 356mm	16" 406mm	17" 432mm
DEPTH W/O HUB	1.90" 48mm		
GRIP OPTIONS	<ul style="list-style-type: none"> Flexible Vinyl Leather Wrap Optional red stitching available 		
EMBLEM OPTIONS	<ul style="list-style-type: none"> Center Cap or Horn Button Emblem: VIP Logo, Custom Logo, Horn Trumpet, or Blank Emblem Size: 35mm 		
APPLICATION OPTIONS	<ul style="list-style-type: none"> Frame-Mounted Spinner Knob (14" & 16" only) 		
PRIMARY MARKETS	<ul style="list-style-type: none"> CONSTRUCTION & AGRICULTURE OFF-HIGHWAY & SPECIALTY DEFENSE POWER SPORTS 		

Shown above: vinyl molded grip, black spokes
Detail shown: optional red stitching

SPOKE DESIGN OPTIONS

Spoke Finishes	Spoke Styles
Black Powdercoat	Slotted Exposed Steel




VITAL SERIES




DIAMETER	14" 356mm	16" 406mm
DEPTH W/O HUB	3.19" 81mm	
GRIP OPTIONS	<ul style="list-style-type: none"> Flexible Vinyl Leather Wrap 	
EMBLEM OPTIONS	<ul style="list-style-type: none"> Center Cap or Horn Button Emblem: VIP Logo, Custom Logo, Horn Trumpet, or Blank Emblem Size: 35mm 	
APPLICATION OPTIONS	<ul style="list-style-type: none"> Frame-Mounted Spinner Knob 	
PRIMARY MARKETS	<ul style="list-style-type: none"> CONSTRUCTION & AGRICULTURE OFF-HIGHWAY & SPECIALTY DEFENSE POWER SPORTS 	

Shown above: fully molded vinyl grip, spokes, and top cap for extreme durability and maximum corrosion resistance

SPOKE DESIGN OPTIONS

Spoke Finishes	Spoke Styles
Black Vinyl	Fully Overmolded





STANDARD WHEEL DESIGNS

VECTOR SERIES



Shown above: polyurethane molded foam grip with solid black spokes

DIAMETER	20"	22"
	508mm	559mm
DEPTH W/O HUB	2.54"	
	65mm	
GRIP OPTIONS	<ul style="list-style-type: none"> • Flexible Vinyl (20" Only) • Polyurethane Foam (22" only) • Leather Wrap (20" only) 	
EMBLEM OPTIONS	<ul style="list-style-type: none"> • Center Cap or Horn Button • Emblem: VIP Logo, Custom Logo, Horn Trumpet, or Blank • Emblem Size: 35mm 	
PRIMARY MARKETS	<ul style="list-style-type: none"> COMMERCIAL TRUCK FIRE & RESCUE MOTORCOACH & RV SCHOOL & TRANSIT BUS CONSTRUCTION & AGRICULTURE OFF-HIGHWAY & SPECIALTY DEFENSE 	



STANDARD WHEEL DESIGNS

VANTAGE SERIES



Shown above: vinyl molded grip with black spokes

DIAMETER	20"
	508mm
DEPTH W/O HUB	5.26" (deep dish)
	134mm
GRIP OPTIONS	<ul style="list-style-type: none"> • Flexible Vinyl • Leather Wrap
EMBLEM OPTIONS	<ul style="list-style-type: none"> • Center Cap or Horn Button • Emblem: VIP Logo, Custom Logo, Horn Trumpet, or Blank • Emblem Size: 35mm
PRIMARY MARKETS	<ul style="list-style-type: none"> COMMERCIAL TRUCK FIRE & RESCUE MOTORCOACH & RV SCHOOL & TRANSIT BUS

SPOKE DESIGN OPTIONS

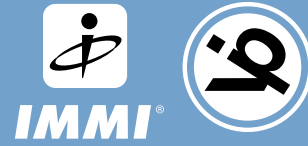
Spoke Finishes	Spoke Styles
<ul style="list-style-type: none"> Black Powdercoat Chrome Plated 	<ul style="list-style-type: none"> Solid Exposed Steel 3-Hole Exposed Steel (20" Chrome-Plated, Leather only)

SPOKE DESIGN OPTIONS

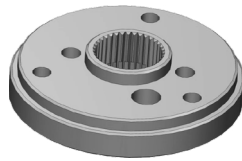
Spoke Finishes	Spoke Styles
<ul style="list-style-type: none"> Black Powdercoat Silver Powdercoat 	<ul style="list-style-type: none"> Slotted Exposed Steel

CONFIGURATION OPTIONS

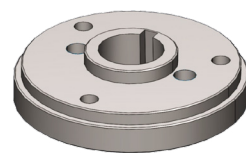
HUBS, SPACERS, BOOTS



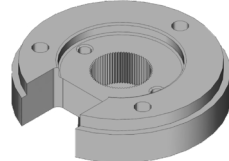
HUBS & HUB SPACERS



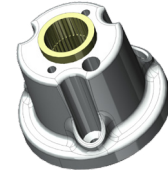
Standard Spline Configuration



Keyway Configuration



Clockspring Cutout Configuration



Cast Hub with Spline Insert



Hub Spacer

HUB CONFIGURATIONS

IMMI VIP P/N	SPLINE DIAMETER	SPLINE COUNT	HUB HEIGHT	MACHINED / CAST	TYPICAL APPLICATIONS
HK4	1"	36	1.2"	Machined	Heavy truck, RV
HK5	7/8"	36	1.2"	Machined	Construction Equip, Navistar
HK11	13/16"	40	1.4"	Machined	Ford Heavy Truck
HK12	11/16"	40	1.4"	Machined	UTV, Tractor, Ford
HK17	13/16"	40	1.7"	Machined	PACCAR
HK31	24mm	72	1.15"	Machined	Freightliner
HK30	1"	36	2.9"	Cast	Various
HK64A	3/4"	36	1.1"	Machined	GM
HK4VK	1"	Keyway	1.0"	Machined	Various
HKSGA	Hub Spacer 23.6mm – fits between hub and base wheel to lift wheel off column				

COLUMN SHROUDS (BOOTS)



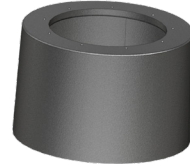
D4B



R4B



CW5B



CW6B



Shown: HK30 Cast Hub with CW6B Boot

COLUMN SHROUD CONFIGURATIONS

IMMI VIP P/N	SHROUD HEIGHT	DIAMETER	TYPICAL APPLICATIONS
D4B	.85"	3.8"	Various
L4B	1.4"	3.9"	Various
R4B	1.6"	3.6"	Fixed column PACCAR and Freightliner
CW5B	2.4"	4.4"	Construction Equipment
CW6B	2.8"	4.5"	Various
E4B2	3.8"	3.0"	For HK30 only, Freightliner Pre-2007

IMMI VIP WHEELS CAN BE CONFIGURED TO FIT ANY VEHICLE ON THE PLANET

Don't see the right configuration for your application?
Contact IMMI VIP at immiwheels@imminet.com for additional configuration options



VALOR SERIES BASE WHEEL CONFIGURATIONS

PART NUMBER	DIAM.	GRIP	SPOKES
BBBL1654SS	16"	PUR	Black Powdercoat (Solid)
BBBL1654	16"	Leather	Black Powdercoat (Solid)
SSBL1654SS	16"	PUR	Silver Powdercoat (Slotted)
BBABL1654SS	16"	PUR	Black Powdercoat Aluminum (Solid)
BSBL1654SS	16"	PUR	Black Powdercoat Quick-Release (Slotted)

VITAL SERIES BASE WHEEL CONFIGURATIONS

PART NUMBER	DIAM.	GRIP	INTEGRATED HUB	BOOT
N14343PL	14"	Leather	HK4 - 1" x 36 spline	N/A
N143403P	14"	Vinyl	HK4 - 1" x 36 spline	N/A
N14343BP	14"	Vinyl	HK4 - 1" x 36 spline	1416B3 (1.46")
N143503P	14"	Vinyl	HK5 - 7/8" x 36 spline	N/A
N14353BAP	14"	Vinyl	HK5 - 7/8" x 36 spline	1416B3A (.835")
N14353BP	14"	Vinyl	HK5 - 7/8" x 36 spline	1416B3 (1.46")
N14364A3DP	14"	Vinyl	HK64A - 3/4" x 36 spline	N/A
N163403P	16"	Vinyl	HK4 - 1" x 36 spline	N/A
N16343BP	16"	Vinyl	HK4 - 1" x 36 spline	1416B3 (1.46")
N163503P	16"	Vinyl	HK5 - 7/8" x 36 spline	N/A
N16353BP	16"	Vinyl	HK5 - 7/8" x 36 spline	1416B3 (1.46")

VANISH SERIES BASE WHEEL CONFIGURATIONS

PART NUMBER	DIAM.	GRIP	SPOKES
BKBL1824SS	18"	PUR	Black Powdercoat
BKBL1824V	18"	Vinyl	Black Powdercoat
NKBL1824SS	18"	PUR	Brushed Nickel Plated
CKBL1824SS	18"	PUR	Chrome Plated
BTBL1824	18"	Leather	Black Powdercoat
NTBL1824	18"	Leather	Brushed Nickel Plated
CTBL1824	18"	Leather	Chrome Plated
CHBW1824	18"	Burl Wood/ Black Leather	Chrome Plated
NKBL2024V	20"	Vinyl	Brushed Nickel Plated
BKBL2024V	20"	Vinyl	Black Powdercoat
CKBL2024V	20"	Vinyl	Chrome Plated
NTBL2024	20"	Leather	Brushed Nickel Plated
BTBL2024	20"	Leather	Black Powdercoat
CTBL2024	20"	Leather	Chrome Plated

VECTOR SERIES BASE WHEEL CONFIGURATIONS

PART NUMBER	DIAM.	GRIP	SPOKES
CBBL203V	20"	Vinyl	Chrome Plated
CBBL203	20"	Leather	Chrome Plated
BBBL203V	20"	Vinyl	Black Powdercoat
BBBL203	20"	Leather	Black Powdercoat
CHBL203	20"	Leather	Chrome Plated (w/ 3-hole spokes)
BBBL223SS	22"	PUR	Black Powdercoat

VANTAGE SERIES BASE WHEEL CONFIGURATIONS

PART NUMBER	DIAM.	GRIP	SPOKES
BDBL2024V	20"	Vinyl	Black Powdercoat
SDBL2024V	20"	Vinyl	Silver Powdercoat
BDBL2024	20"	Leather	Black Powdercoat
SDBL2024	20"	Leather	Silver Powdercoat

VENTURE SERIES BASE WHEEL CONFIGURATIONS

PART NUMBER	DIAM.	GRIP	SPOKES
CXBL184SS	18"	PUR	Chrome Plated (Slotted)
CXBL184	18"	Leather	Chrome Plated (Slotted)
CBWR184	18"	Polished Mahogany	Chrome Plated (Slotted)
CBWR184BLK	18"	Polished Black Wood	Chrome Plated (Slotted)
CBWR184VH	18"	Polished Ivory Wood	Chrome Plated (Slotted)
CBWR204	20"	Polished Mahogany	Chrome Plated (Solid)

VANGUARD SERIES BASE WHEEL CONFIGURATIONS

PART NUMBER	DIAM.	GRIP	SPOKES
BSBL143V	14"	Vinyl	Black Powdercoat (Slotted)
BSBL143LR	14"	Leather with Red Stitching	Black Powdercoat (Slotted)
BSBL163V	16"	Vinyl	Black Powdercoat (Slotted)
BSBL163L	16"	Leather	Black Powdercoat (Slotted)
BSBL173V	17"	Vinyl	Black Powdercoat (Slotted)

**IMMI VIP STEERS THE WORLD, PARTNERING WITH GLOBAL LEADERS
IN EVERY COMMERCIAL VEHICLE MARKET**

Tough: Global defense vehicles to arctic exploration trucks

Durable: School buses and city buses to high-volume delivery vans

Luxurious: Multi-million dollar motor homes to million-mile over-the-road trucks

*Adaptable: No matter what vehicle you move the world with, IMMI VIP has the
right steering wheel for your hands*



On-highway



Off-highway



*Customer
specific*



Aftermarket



Specialty



STEERING THE WORLD

imminet.com/wheels

ABOUT US



CATALOG



IMMI VIP

151 S. Ram Road

Antioch, IL 60002

847.395.7250

immiwheels@imminet.com

imminet.com/wheels

